



MONTHLY MEMBERSHIP PROGRESS REPORT

District 35 L

Results as of: 02/28/2018

GMT: STACEY JONES

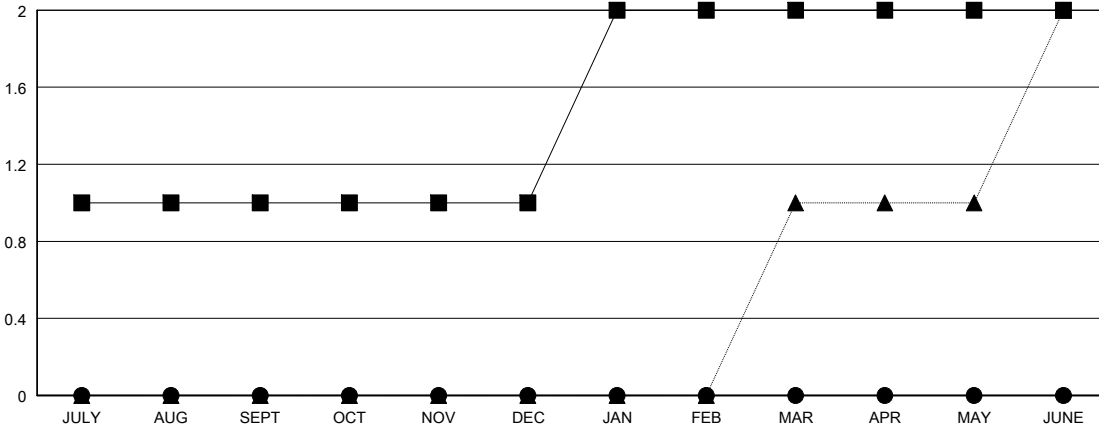
LOCATION FLORIDA

GMT CA

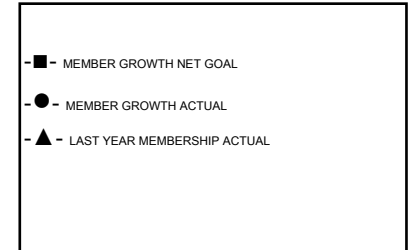
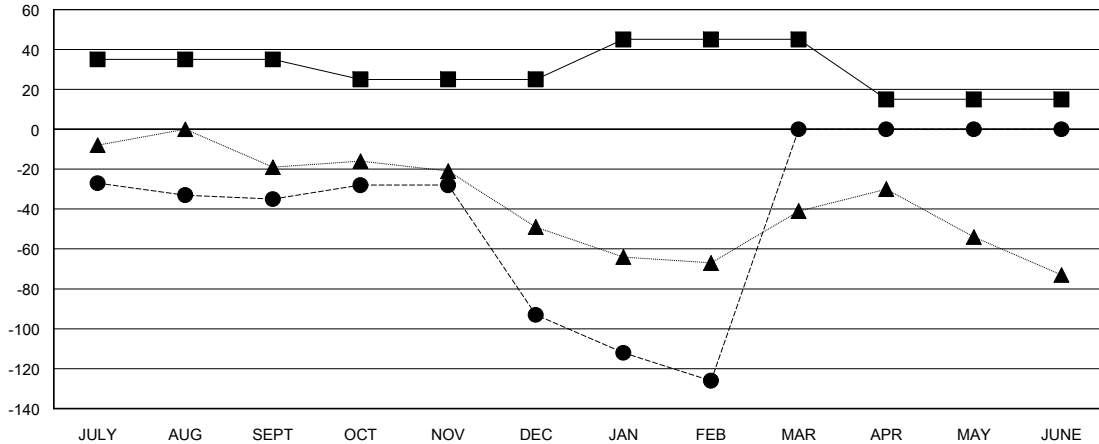
| Clubs | | | |
|-----------------------|---------------|-----------|---------------|
| RESULTS FOR 2017-2018 | | | |
| QUARTER | NEW CLUB GOAL | NEW CLUBS | DROPPED CLUBS |
| JULY/AUG/SEPT | 1 | 0 | 1 |
| OCT/NOV/DEC | 0 | 0 | 1 |
| JAN/FEB/MAR | 1 | 0 | 1 |
| APR/MAY/JUNE | 0 | 0 | 0 |

| Members | | | |
|-----------------------|------------------------|----------------------|--|
| RESULTS FOR 2017-2018 | | | |
| QUARTER | MEMBER GROWTH NET GOAL | MEMBER GROWTH ACTUAL | DROPPED MEMBERS ACTUAL (including transfers) |
| JULY/AUG/SEPT | 35 | 65 | 81 |
| OCT/NOV/DEC | -10 | 45 | 86 |
| JAN/FEB/MAR | 20 | 46 | 67 |
| APR/MAY/JUNE | -30 | 0 | 0 |

GOALS AND ACTUAL NEW CLUBS CUMULATIVE



GOALS AND ACTUAL MEMBERS CUMULATIVE



| |
|------------------|
| DROPPED CLUBS: 3 |
|------------------|

33 CLUBS OF 70 ADDED 1 OR MORE NEW MEMBERS

| GENDER DISTRIBUTION | |
|--|--------------|
| MALE | 901 (67.24%) |
| FEMALE | 439 (32.76%) |
| Women Percentage Fiscal Year Goal: 35% | |

| DROPPED MEMBERS | |
|-----------------|------------|
| DECEASED | 17 |
| CLUB CANCELLED | 20 |
| OTHER | 194 |
| TOTAL | 231 |

[CLICK HERE FOR CUMULATIVE MEMBERSHIP DATA](#)

| | |
|---------------------------------|-----|
| TOTAL FAMILY UNIT MEMBERS | 263 |
| FAMILY MEMBERS PAYING HALF DUES | 135 |